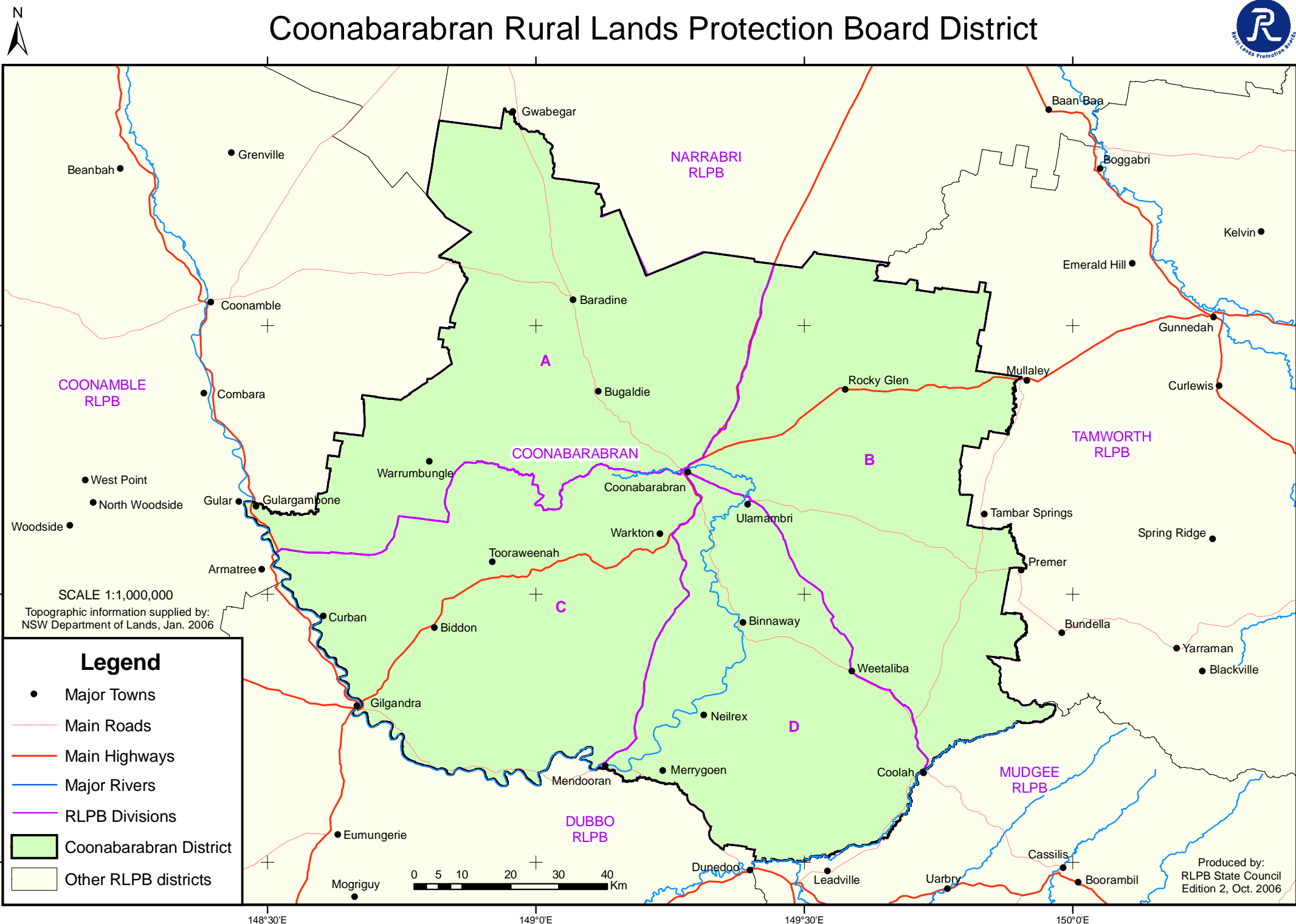


Coonabarabran Rural Lands Protection Board District



31°0'S
31°30'S
32°0'S

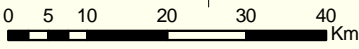
31°0'S
31°30'S
32°0'S

148°30'E 149°0'E 149°30'E 150°0'E

SCALE 1:1,000,000
Topographic information supplied by:
NSW Department of Lands, Jan. 2006

Legend

- Major Towns
- Main Roads
- Main Highways
- Major Rivers
- RLPB Divisions
- Coonabarabran District
- Other RLPB districts



Produced by:
RLPB State Council
Edition 2, Oct. 2006