

July 2011

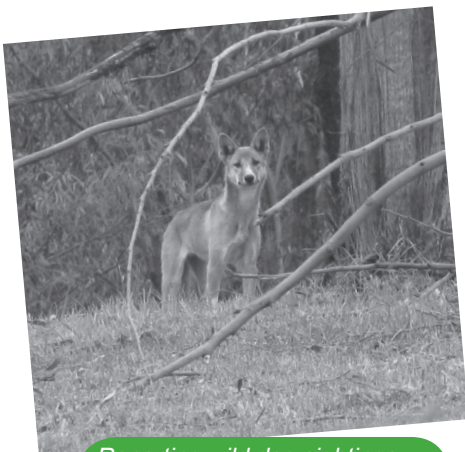
Cumberland landholder newsletter

3 simple steps

There are three simple steps to lodge online:

- 1 Look at the top-right hand corner of the enclosed Land and Stock Return for your Holding reference number and online password.
- 2 Visit www.lhpa.org.au/landandstock and log in using your Holding reference number and unique online password.
- 3 Fill in your land and stock details.

Even if you have no stock, it is important for you to complete a Land and Stock Return. Unless you complete a return, we automatically apply an animal health charge to next year's rates. It is a legal requirement that you lodge a return under the Rural Lands Protection Act 1998.



Reporting wild dog sightings can assist in planning and coordination across a region.

Online land and stock returns now even easier

Now the LHPA has made it even easier to lodge your Land and Stock Return online.

Last year thousands of landholders in NSW chose to take advantage of the online lodgment facility when they received their annual Land and Stock returns in the mail.

This year, you can also update your holding and occupier details online.

Your 2011 Land and Stock Return can be lodged online at www.lhpa.org.au/landandstock

Land and Stock Returns provide Livestock Health and Pest Authorities with important information about properties in NSW.

'The online form takes around five minutes to complete and asks the same questions as the paper-based form,' said Cumberland LHPA



general manager Greg Wood. 'All you need is access to a computer with internet.'

For more information about lodging online, including Frequently Asked Questions and privacy information, visit www.lhpa.org.au/landandstock.

Remember, your completed 2011 Land and Stock Return is due by 31 August.

Reporting the key to success with wild dog management

There are currently three Wild Dog Management Plans functioning within the Cumberland LHPA – Southern Highlands, Oberon/Blue Mountains and Shoalhaven. A plan for the Maitland/Gosford area (Division A) is being developed.

Wild dog management plans are developed to allow for coordinated and cooperative management in controlling wild dogs across all land tenures in

order to minimise the impacts on livestock and the environment.

Of the three declared pest species in NSW requiring control, the wild dog is by far the most challenging.

The Cumberland LHPA in conjunction with the National Parks and Wildlife Service and other agencies is ensuring there is a reliable management structure

Continued over the page

Contact your local office today – or visit www.lhpa.org.au

Integrated control best approach for buffalo fly

By Jenny Hanks, veterinary student, Charles Sturt University

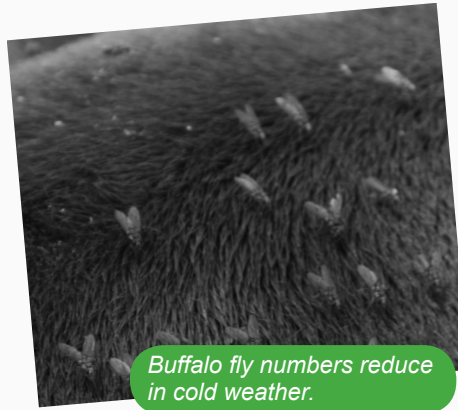
The buffalo fly (*Haematobia irritans*) is a small blood sucking parasite which infests cattle and buffalo. Buffalo fly appears to be spreading south and was detected on several properties in the Maitland area in 2010-2011.

Lifecycle

Adult buffalo flies live for 10-20 days on the hair coat of the host animal. Females lay their eggs in fresh cattle dung, and then return to the host. Eggs hatch into larvae in the dung and develop into young adult flies. Young adult flies can emerge as soon as 10 days after egg laying in optimal conditions. Optimal conditions are a hot and humid climate. Buffalo flies may disappear in cold weather or their numbers may greatly reduce.

Effect on cattle

Irritation caused by buffalo flies can lead to distress, disruption to



Buffalo fly numbers reduce in cold weather.

grazing time and hide damage from constant rubbing. Production losses result from permanent hide damage, lowered weight gain and lowered milk yield. It is estimated that dairy cattle with a moderate level of infestation have their milk yield reduced by 0.5 litres per cow per day.

Treatment and control

Treatment is recommended if you estimate that there are 30 or more

flies on a dairy cow, or when there are an estimated 200+ flies on beef cattle. An integrated control program with non-chemical methods used in conjunction with strategic chemical treatments is recommended.

Non-chemical control options

- Buffalo fly traps. This trap can reduce fly numbers on cattle by 60-70%. It is simple to build.
- Allergic cattle. Some animals are intensely irritated by small numbers of flies. Consider culling these animals.
- Dung beetles. These bury dung pats which make it difficult for buffalo fly eggs to survive.

For more information contact the district vet at your local Cumberland LHPA office.



Buffalo fly traps are easy to build and effective.

Chemical control options for buffalo fly

Application method	Advantages	Disadvantages
Ear tags	Effective for 10 or 16 weeks. Usually only need to tag cattle once per season.	Tags must be removed at 10 or 16 weeks (failure to remove tags may promote resistance).
Sprays	Relatively cheap	Multiple treatments throughout the season are required. Can be difficult to apply correctly.
Pour Ons	Easy to apply. Many also treat worms and lice.	Some products are expensive Requires repeated treatments.
Back rubbers	Low cost and labour. Self treatment.	No control over dose per animal.

Early reporting key to wild dog success

From page 1

for wild dog control through the establishment and implementation of wild dog management plans. For these plans to be effective, a reliable framework of reporting sightings and impacts is essential. This reporting is absolutely critical in wild dog prone regions.

Immediately notify your local ranger every time you notice signs of wild dog activity such as sightings, tracks, scats, howling and stock attacks. If wild dogs are not causing damage on your land, be assured they will have some negative impact for someone else in your local community.

So report all wild dog activity and any information relating to wild dogs. It's essential data aiding the efficient operation of wild dog management plans that benefit the rural community and the broader environment.

Under the Rural Lands Protection Act 1998 it is the landholder's statutory responsibility to continuously control wild dogs. For wild dog assistance and control options contact your local ranger.

Copies of the wild dog management plans are available from the Cumberland LHPA upon request.